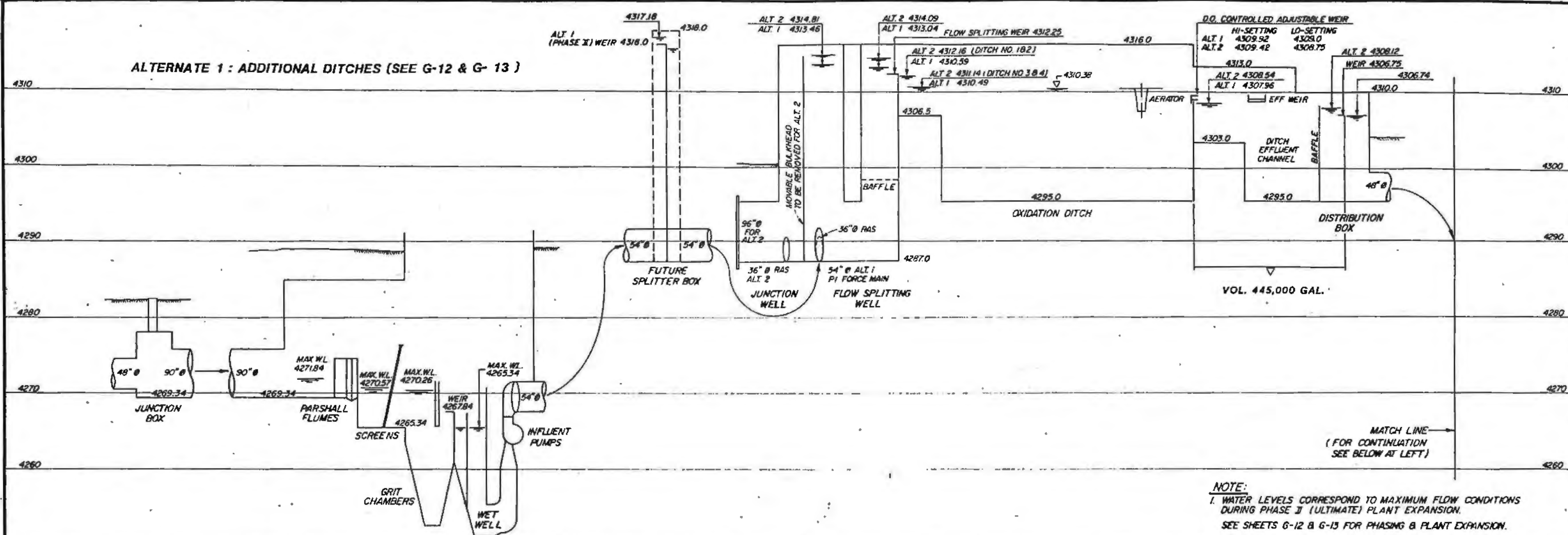
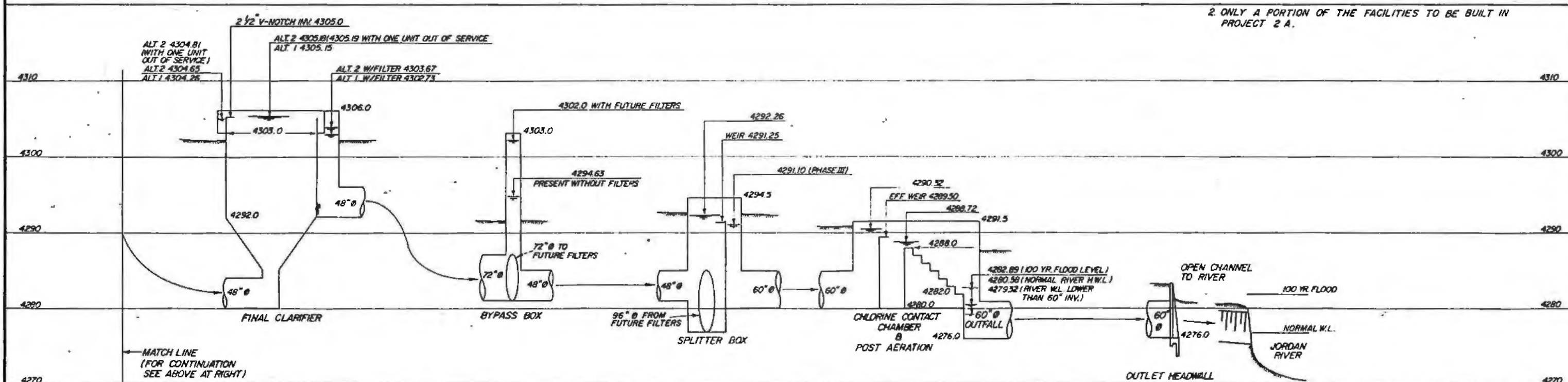


ALTERNATE 1 : ADDITIONAL DITCHES (SEE G-12 & G-13 )



- NOTE:**
1. WATER LEVELS CORRESPOND TO MAXIMUM FLOW CONDITIONS DURING PHASE II (ULTIMATE) PLANT EXPANSION. SEE SHEETS G-12 & G-13 FOR PHASING & PLANT EXPANSION.
  2. ONLY A PORTION OF THE FACILITIES TO BE BUILT IN PROJECT 2 A.



HYDRAULIC PROFILE

**RECORD DRAWING**  
 This record drawing has been prepared, in part, on the basis of information compiled and furnished by others. The Engineer is not responsible for any errors or omissions which have been incorporated into this document as a result.

JOB NO. 70202470

REV	DATE	BY	DESCRIPTION

SCALE:

DESIGNED	<i>[Signature]</i>	SUBMITTED	<i>[Signature]</i>	DATE	5-23-71
BRAWN	<i>[Signature]</i>	PROJECT ENGINEER		R.C.E. NO.	
CHECKED	<i>[Signature]</i>	RECOMMENDED	<i>[Signature]</i>	DATE	5-23-71
		JAMES M. MONTGOMERY CONSULTING ENGINEERS INC.		R.C.E. NO.	

**JAMES M. MONTGOMERY CONSULTING ENGINEERS, INC.**  
 524 NORTH 300 WEST, SALT LAKE CITY, UTAH 84103

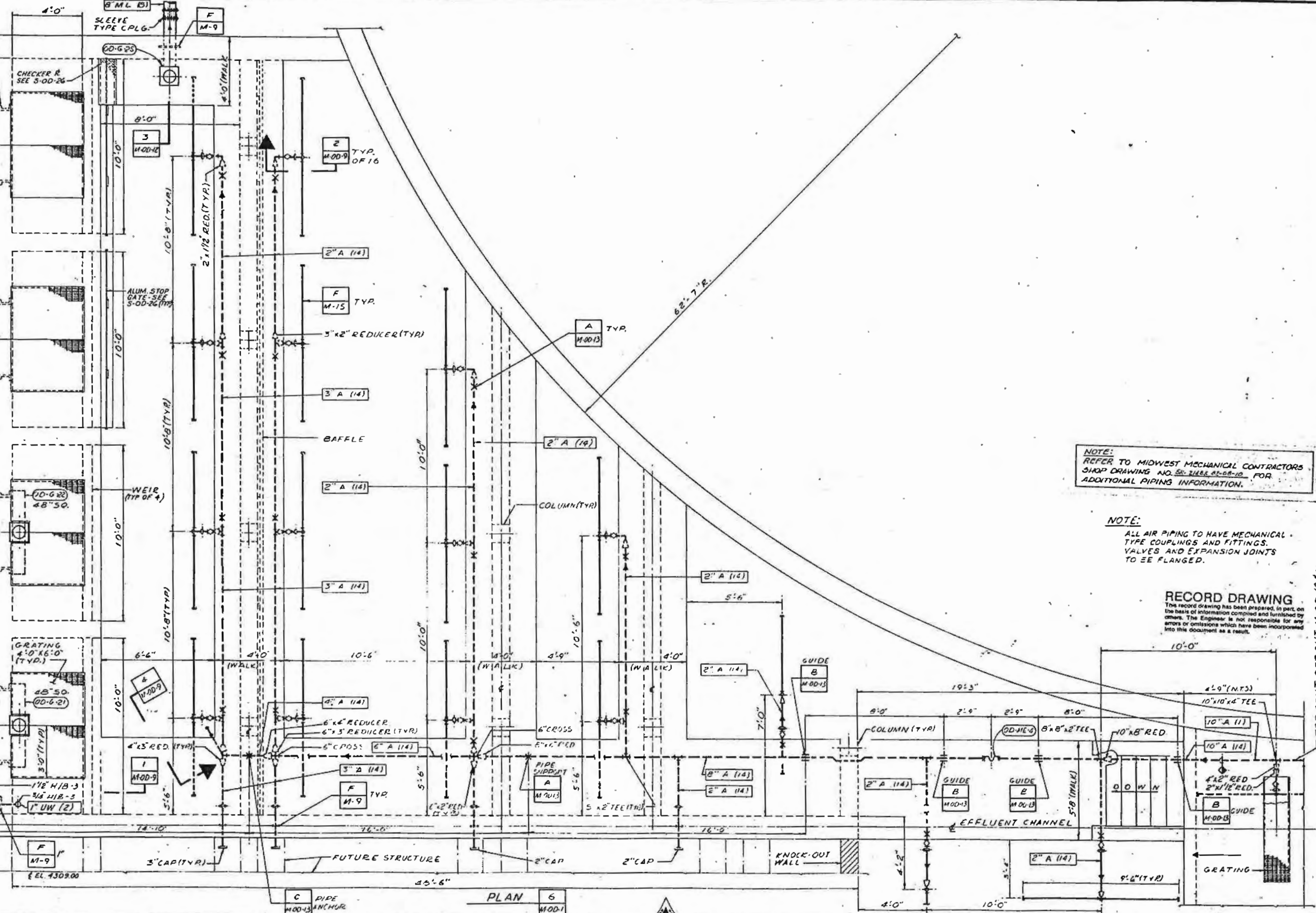


**SOUTH VALLEY WATER RECLAMATION FACILITY**

SOUTH VALLEY JOINT ADMINISTRATIVE BOARD		SHEET <b>G-7</b> OF SHEETS
PROJECT 2A	HYDRAULIC PROFILE	

TYPE "E" WALL THIMBLE, SQ. FLG. INSIDE, ROUND FLG. OUTSIDE (TYP. OF 4)

3/16" ALUM. R-48 SQ. FASTEN TO WALL THIMBLE W/4-BOLTS (TYP. 2 PLACES)



NOTE:  
REFER TO MIDWEST MECHANICAL CONTRACTORS SHOP DRAWING NO. 50-21488 82-08-10 FOR ADDITIONAL PIPING INFORMATION.

NOTE:  
ALL AIR PIPING TO HAVE MECHANICAL TYPE COUPLINGS AND FITTINGS VALVES AND EXPANSION JOINTS TO BE FLANGED.

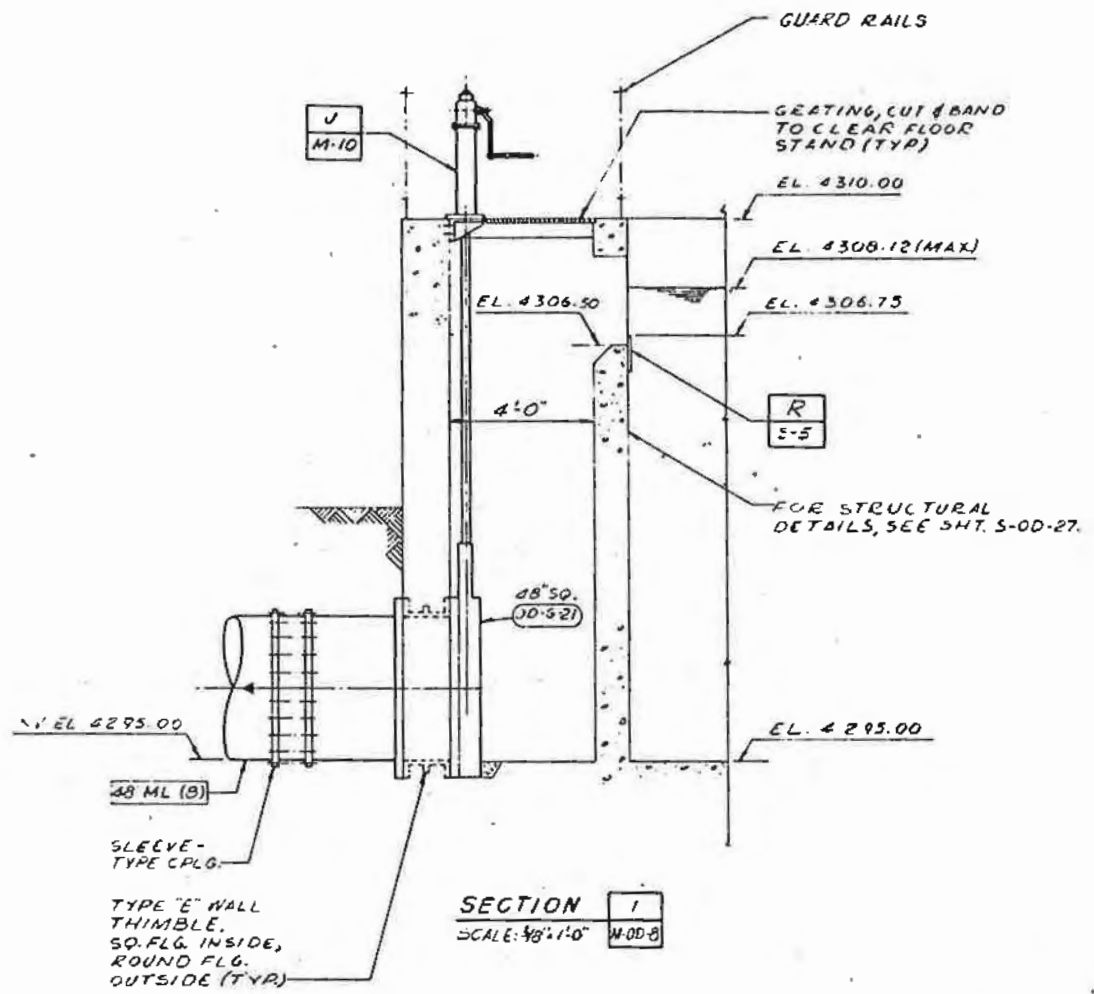
RECORD DRAWING  
This record drawing has been prepared, in part, on the basis of information compiled and furnished by others. The Engineer is not responsible for any errors or omissions which have been incorporated into this document as a result.

PLAN 6 MOD-1

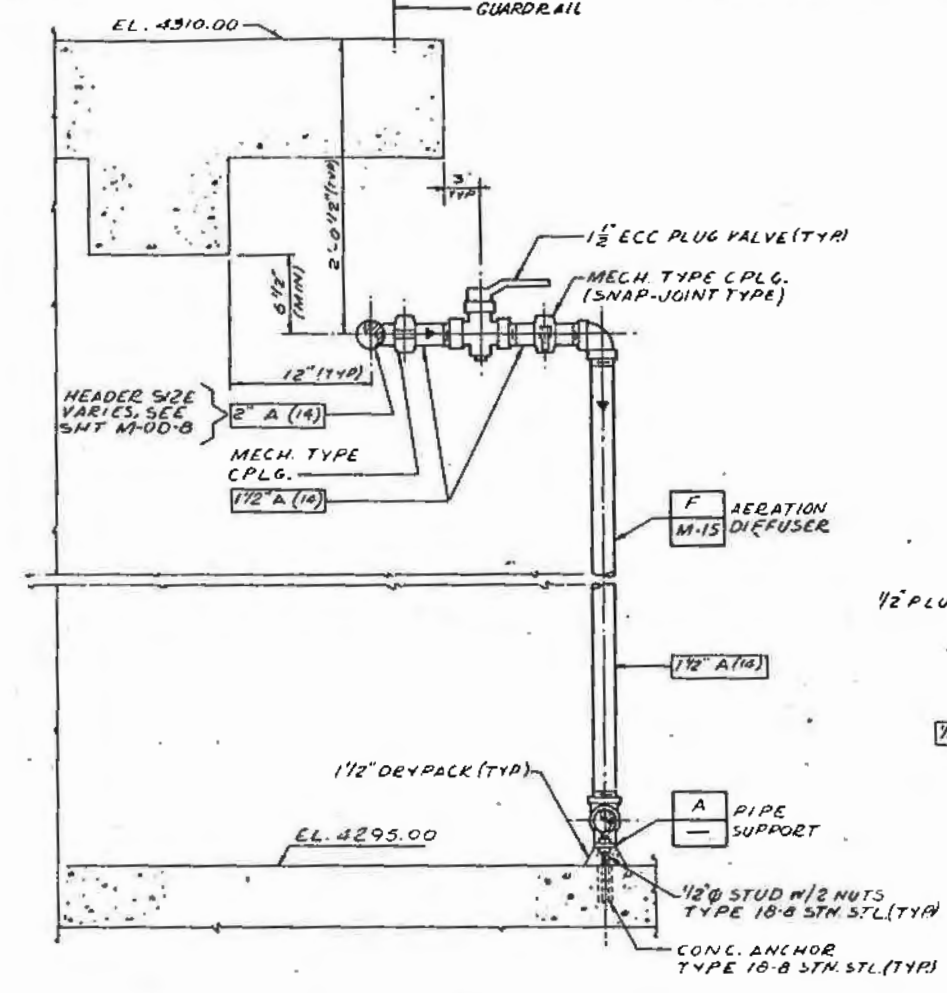
SCALE: 3/8"=1'-0"		DESIGNED: <i>[Signature]</i> DRAWN: <i>[Signature]</i> CHECKED: <i>[Signature]</i>	SUBMITTED: <i>[Signature]</i> 5/4/80 PROJECT ENGINEER: <i>[Signature]</i> RECOMMENDED: <i>[Signature]</i> 5/25/80 JAMES M. MONTGOMERY CONSULTING ENGINEERS, INC.	SOUTH VALLEY WATER RECLAMATION FACILITY 204 NORTH 300 WEST, SALT LAKE CITY, UTAH 84103	SOUTH VALLEY JOINT ADMINISTRATIVE BOARD PROJECT 2A OXIDATION DITCH, EFFLUENT PLAN	SHEET M-OD-8 OF SHEETS
-------------------	--	--	---	---	---	---------------------------

FOR CONT. SEE SHT. M-OD-10 & 11

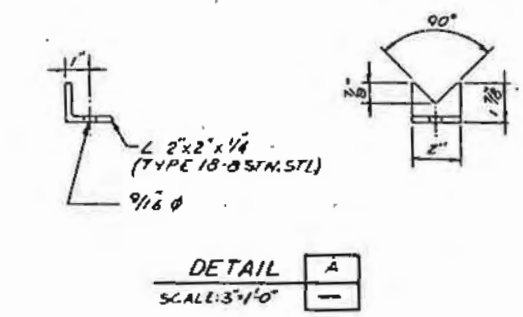
SHEET NO. 808-001 PL. 059



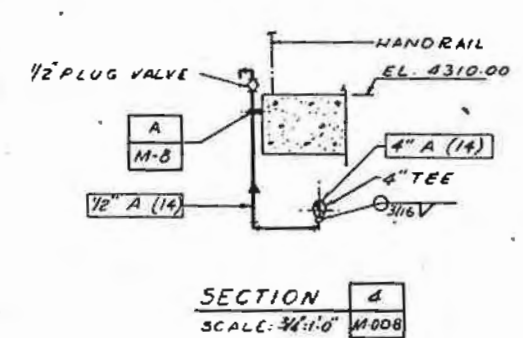
SECTION 1  
SCALE: 3/8"=1'-0" M-00-8



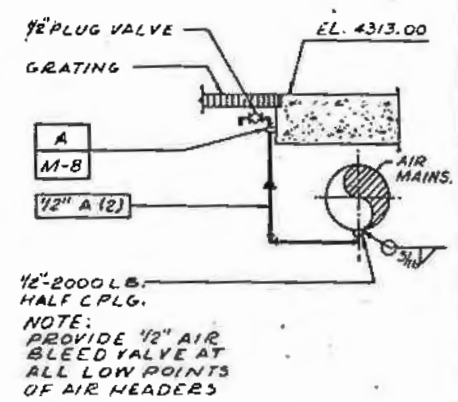
SECTION 2  
SCALE: 1/2"=1'-0" M-00-8



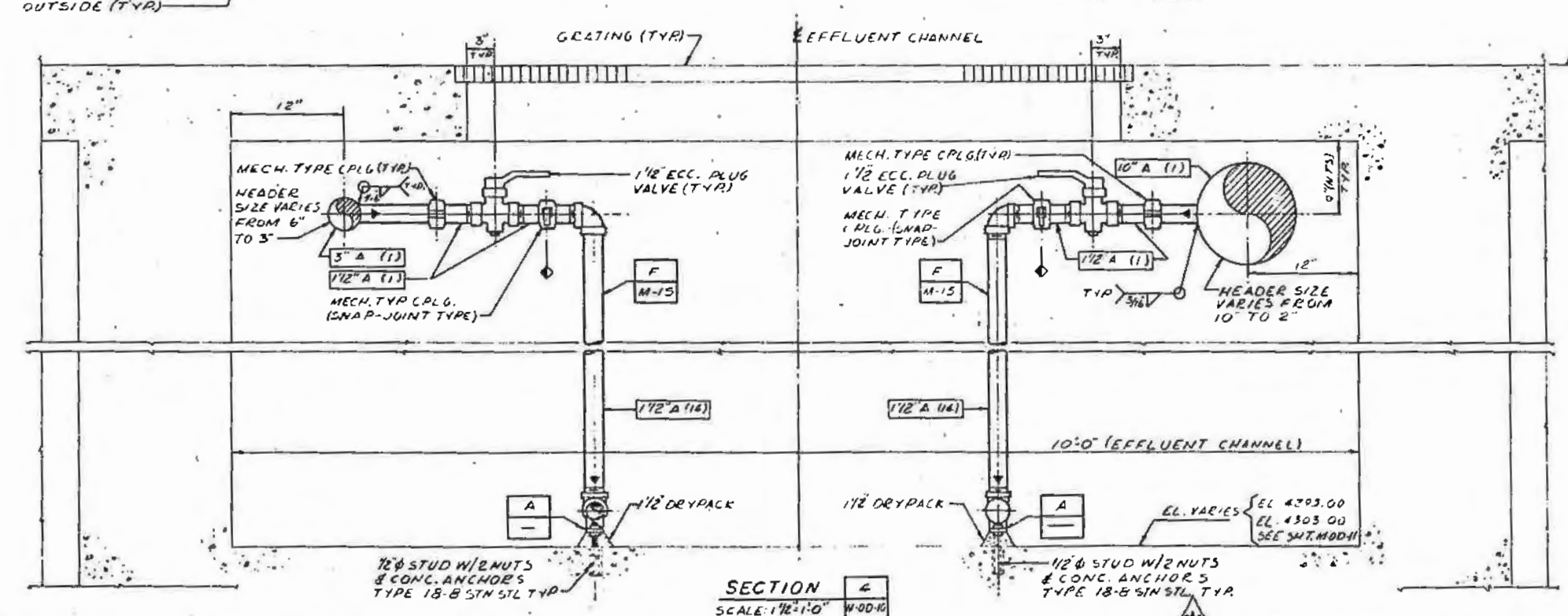
DETAIL A  
SCALE: 3/4"=1'-0"



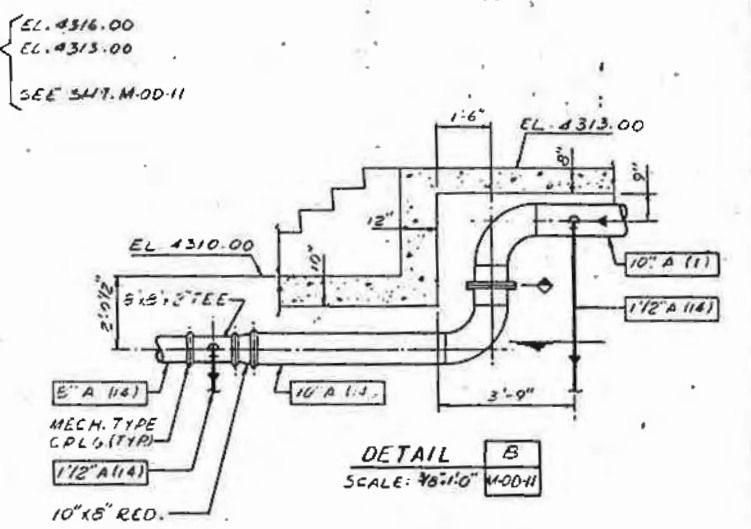
SECTION 4  
SCALE: 3/4"=1'-0" M-00-8



DETAIL B  
SCALE: 3/4"=1'-0" M-00-11



SECTION 4  
SCALE: 1/2"=1'-0" M-00-10



DETAIL B  
SCALE: 3/8"=1'-0" M-00-11

NOTE: REFER TO MIDWEST MECHANICAL CONTRACTORS SHOP DRAWING NO. 32-62-1041 FOR ADDITIONAL PIPING INFORMATION.

RECORD DRAWING  
This record drawing has been prepared, in part, on the basis of information compiled and furnished by others. The Engineer is not responsible for any errors or omissions which have been incorporated into this document as a result.

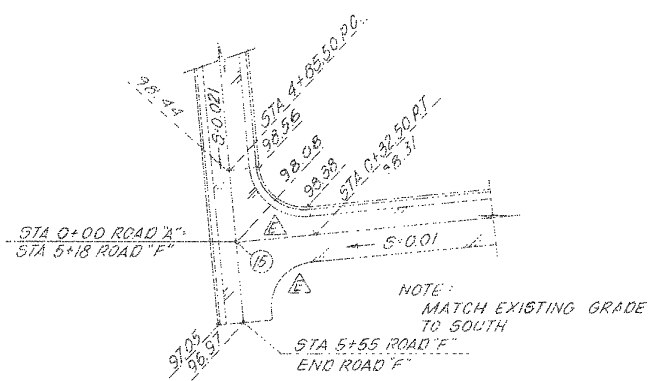
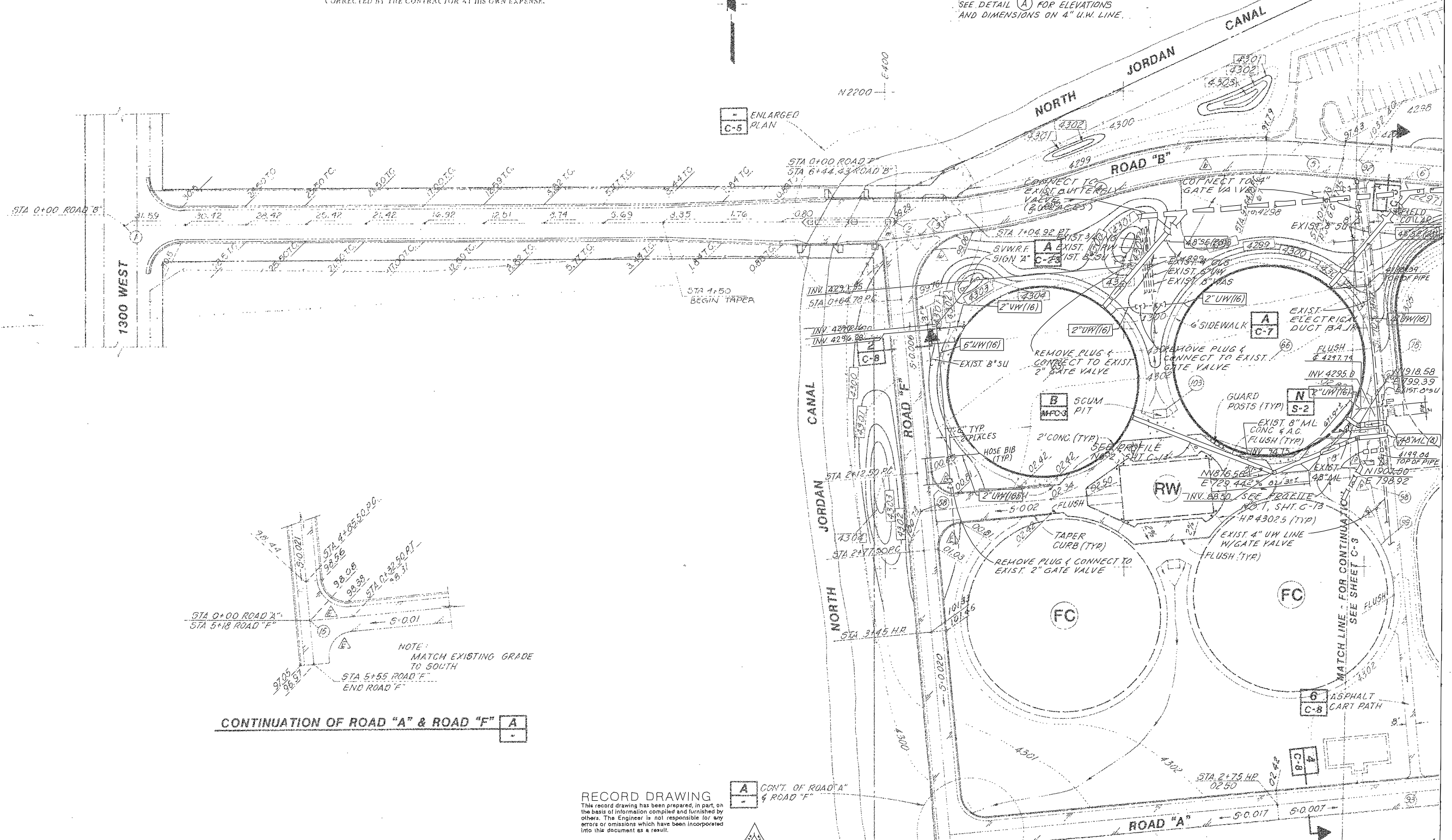
SCALE: AS NOTED		DESIGNED: C. Primmell	SUBMITTED: Madan L. (7/63, 7/65/PA)	<b>JAMES M. MONTGOMERY CONSULTING ENGINEERS, INC.</b> 624 NORTH 300 WEST, SALT LAKE CITY, UTAH 84102		SOUTH VALLEY JOINT ADMINISTRATIVE BOARD		SHEET
AS NOTED		DRAWN: C. Primmell	PROJECT ENGINEER: R.C.E. NO. DATE			PROJECT: 2A	OXIDATION DITCH, EFFLUENT SECTIONS & DETAILS	M-00-9
REV	DATE	BY	DESCRIPTION	CHECKED: J. Primmell	RECOMMENDED: James M. Montgomery	SOUTH VALLEY WATER RECLAMATION FACILITY		

**NOTE:**

1. ALL ROADS ARE FINISH GRADED TO SURFACE. ROAD DAMAGE INCURRED DURING EXECUTION OF THIS CONTRACT SHALL BE CORRECTED BY THE CONTRACTOR AT HIS OWN EXPENSE.

**NOTE:**

SEE DETAIL (A) FOR ELEVATIONS AND DIMENSIONS ON 4" U.W. LINE.



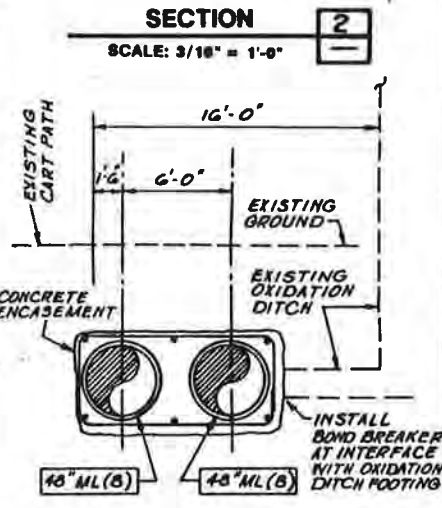
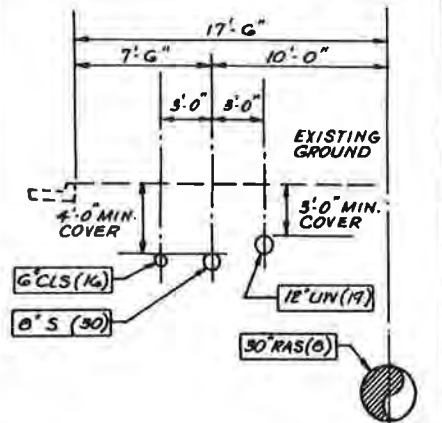
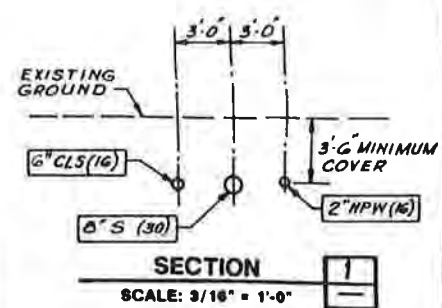
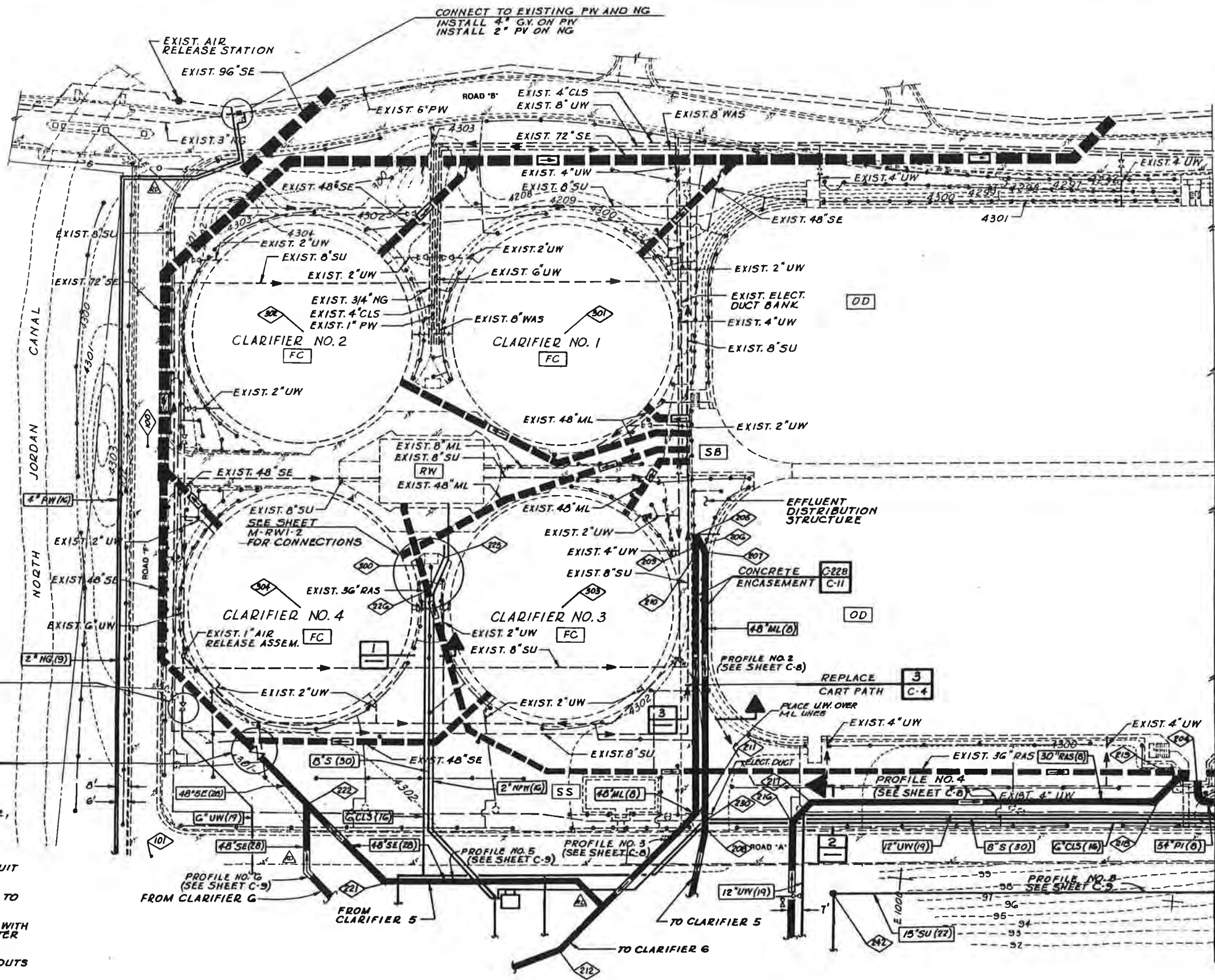
**RECORD DRAWING**  
 This record drawing has been prepared, in part, on the basis of information compiled and furnished by others. The Engineer is not responsible for any errors or omissions which have been incorporated into this document as a result.

**A** CONT. OF ROAD "A" & ROAD "F"

SCALE: 1" = 40'		DESIGNED: <i>H. W.</i>	SUBMITTED: <i>David A. Reed</i>	4-24-87	SOUTH VALLEY JOINT ADMINISTRATIVE BOARD		SHEET C-12
		DRAWN: <i>C. Hancock</i>	PROJECT ENGINEER	R.C.E. NO. DATE	PROJECT 2B		OF SHEETS
		CHECKED: <i>F.R.</i>	RECOMMENDED: <i>James M. Montgomery</i>	2-4-87	YARD PIPING PLAN - AREA NO. 3		
			JAMES M. MONTGOMERY CONSULTING ENGINEERS INC.	R.C.E. NO. DATE			
			624 NORTH 300 WEST, SALT LAKE CITY, UTAH 84103				

CONNECT TO EXISTING PW AND NG  
INSTALL 4" G.Y. ON PW  
INSTALL 2" PV ON NG

EXIST. AIR  
RELEASE STATION  
EXIST. 96" SE



A  
C-11

- NOTE:
- RESTORE ROAD PAVEMENT, CURB & GUTTER, LANDSCAPING, IRRIGATION SYSTEM, AND OTHER EXISTING FEATURES WHERE DISTURBED BY CONSTRUCTION WORK.
  - SEE SHEET E-3 FOR APPROXIMATE LOCATION OF EXISTING ELECTRICAL CONDUIT DUCT BANKS. RETAIN AND PROTECT.
  - UNLESS OTHERWISE SHOWN, ALL PIPING TO HAVE 3'-0" MIN. COVER.
  - REPLACE CURB & GUTTER AT INTERSECTION WITH CARTPATH WITH DEPRESSED CURB & GUTTER PER DETAIL G/C-3.
  - SCUM PIPING TO HAVE PRESSURE CLEANOUTS AT 500 FT. MAX. INTERVALS.

YARD PIPING - AREA A  
SCALE: 1" = 40'

RECORD DRAWING

THESE RECORD DRAWINGS HAVE BEEN PREPARED BASED ON INFORMATION PROVIDED BY OTHERS. THE ENGINEER HAS NOT VERIFIED THE ACCURACY OF SUCH INFORMATION AND SHALL NOT BE RESPONSIBLE FOR ANY ERRORS OR OMISSIONS WHICH MAY BE INCORPORATED HEREIN AS A RESULT.



JOB NO. 606.0250 FILE NO.

REV	DATE	BY	DESCRIPTION
1	11/14/92	dmr	PIPE MATERIALS & RELOCATED

SCALE: 1" = 40'	WARNING: IF THIS BAR DOES NOT MEASURE 1" THEN DRAWING IS NOT TO SCALE.
-----------------	--

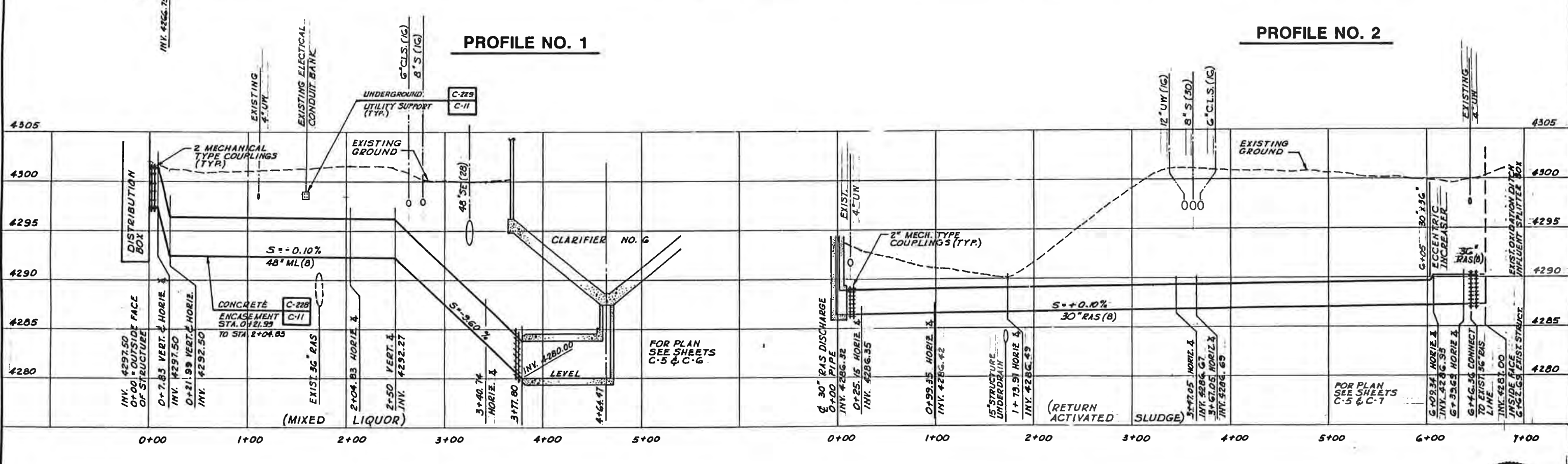
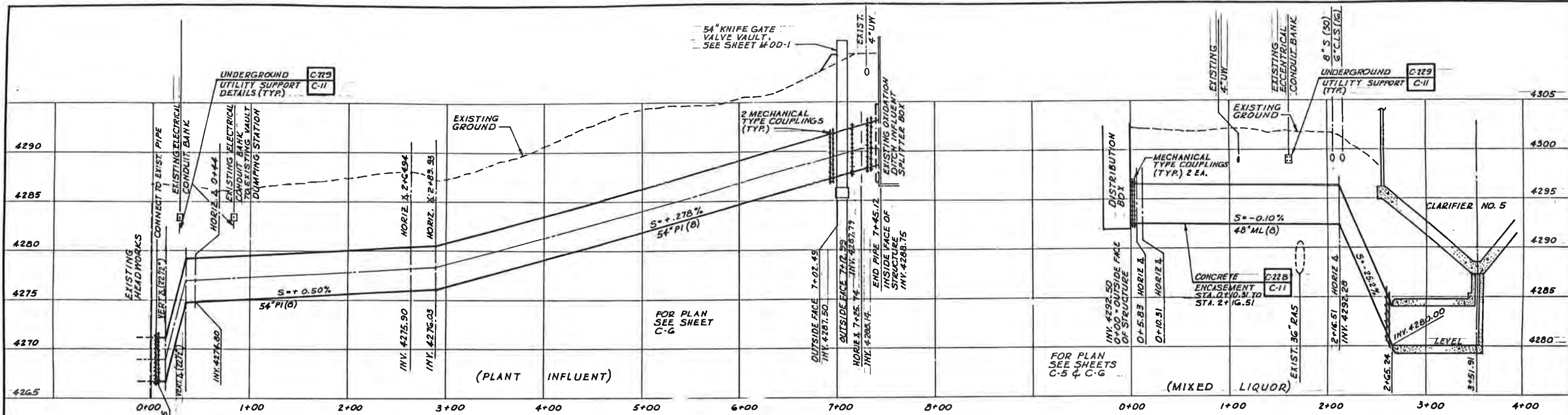
DESIGNED: S. Bupp	SUBMITTED: Hugh C. Rodgers, Jr. PROJECT ENGINEER	DATE: 11/24/92
DRAWN: [Signature]	CHECKED: Kenneth L. Sprin	DATE: 1-24-93

JMM James M. Montgomery Consulting Engineers, Inc. Salt Lake City, Utah



South Valley Water Reclamation Facility

SOUTH VALLEY JOINT ADMINISTRATIVE BOARD		SHEET C-5
PROJECT 3	YARD PIPING - AREA A	OF 5 SHEETS



JOB NO. 608.0230 FILE NO.

SCALE:	VERT. 1" = 5'
	HORIZ. 1" = 50'
WARNING:	IF THIS BAR DOES NOT MEASURE, THEN DRAWING IS NOT TO SCALE.
DESIGNED BY:	S. Coop
DRAWN BY:	Tom Davis
CHECKED BY:	H. Hedger
REVISIONS:	1/17/94 dcm Record Drawing

PROJECT ENGINEER: Hugh C. Hedger 08278 1/28/92  
 PROJECT ENGINEER: Kenneth L. Spivey 5629 1-23-92  
 CONSULTING ENGINEERS, INC.

SUBMITTED BY: Hugh C. Hedger 08278 1/28/92  
 PROJECT ENGINEER: Kenneth L. Spivey 5629 1-23-92  
 CONSULTING ENGINEERS, INC.

JMM James M. Montgomery  
 Consulting Engineers, Inc.  
 Salt Lake City, Utah

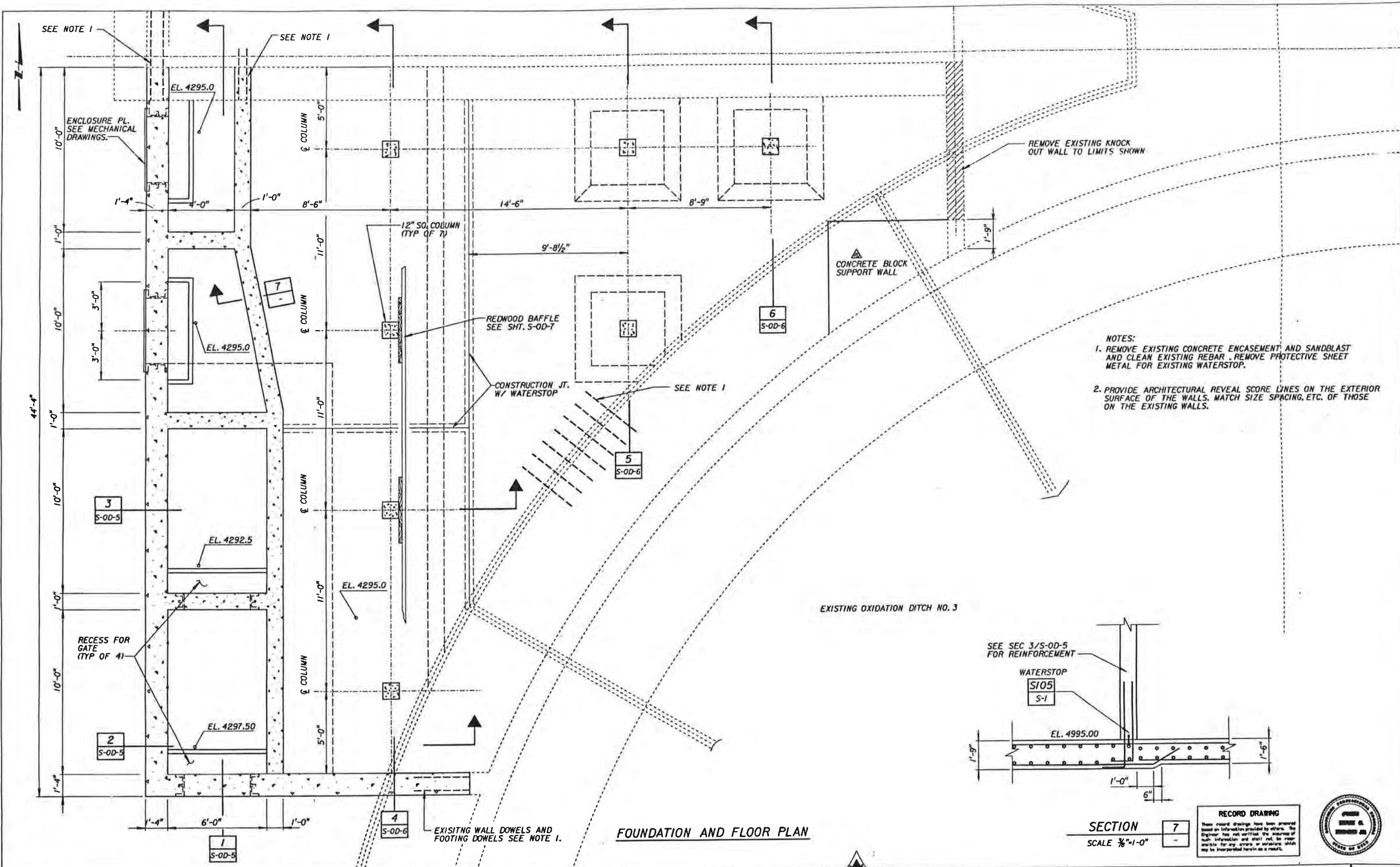


South Valley Water Reclamation Facility

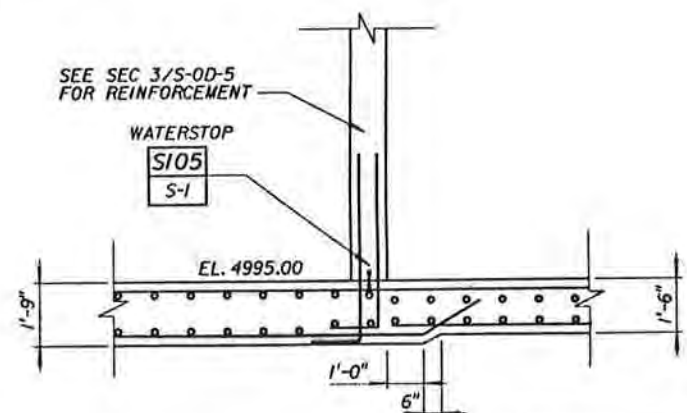
SOUTH VALLEY JOINT ADMINISTRATIVE BOARD  
 PROJECT 3  
 YARD PIPING PROFILES - 1  
 SHEET C-8 OF 8 SHEETS

RECORD DRAWING  
 THESE RECORD DRAWINGS HAVE BEEN PREPARED BASED ON INFORMATION PROVIDED BY OTHERS. THE ENGINEER HAS NOT VERIFIED THE ACCURACY OF SUCH INFORMATION AND SHALL NOT BE RESPONSIBLE FOR ANY ERRORS OR OMISSIONS WHICH MAY BE INCORPORATED HEREIN AS A RESULT.





- NOTES:
1. REMOVE EXISTING CONCRETE ENCASEMENT AND SANDBLAST AND CLEAN EXISTING REBAR. REMOVE PROTECTIVE SHEET METAL FOR EXISTING WATERSTOP.
  2. PROVIDE ARCHITECTURAL REVEAL SCORE LINES ON THE EXTERIOR SURFACE OF THE WALLS. MATCH SIZE SPACING, ETC. OF THOSE ON THE EXISTING WALLS.



RECORD DRAWING  
 These record drawings have been prepared based on information provided by others. The Engineer has not verified the accuracy of such information and shall not be responsible for any errors or omissions which may be incorporated herein as a result.



FOUNDATION AND FLOOR PLAN

SECTION 7  
 SCALE 3/8" = 1'-0"

REV	DATE	BY	DESCRIPTION
1-7-94		HPC	ADDED CONC. BLOCK SUPPORT WALL
2-7-92		HM	REISSUE FOR DIMENSION ADDITIONS

SCALE: 3/8" = 1'-0"  
 WARNING: IF THIS BAR DOES NOT MEASURE THEN DRAWING IS NOT TO SCALE.

DESIGNED	JMM	SUBMITTED	
DRAWN		PROJECT ENGINEER	R. C. E. NO. DATE
CHECKED		JAMES M. MONTGOMERY	R. C. E. NO. DATE
		CONSULTING ENGINEERS, INC.	

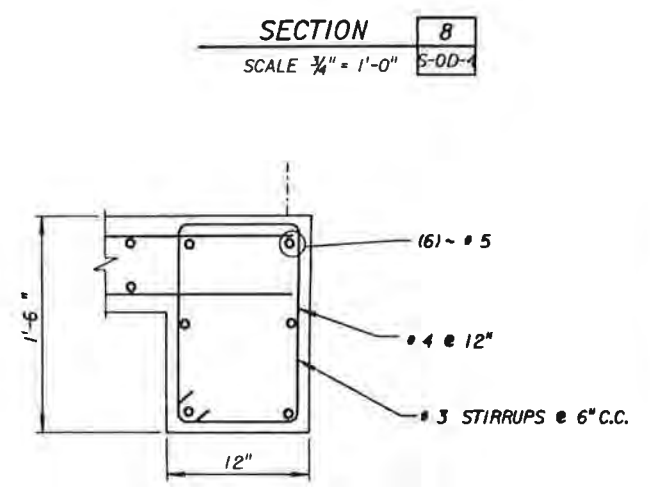
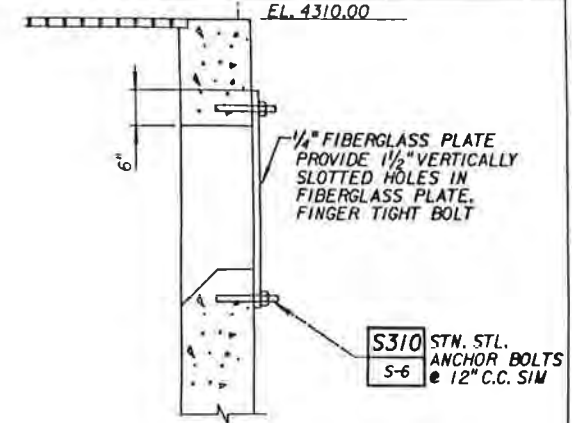
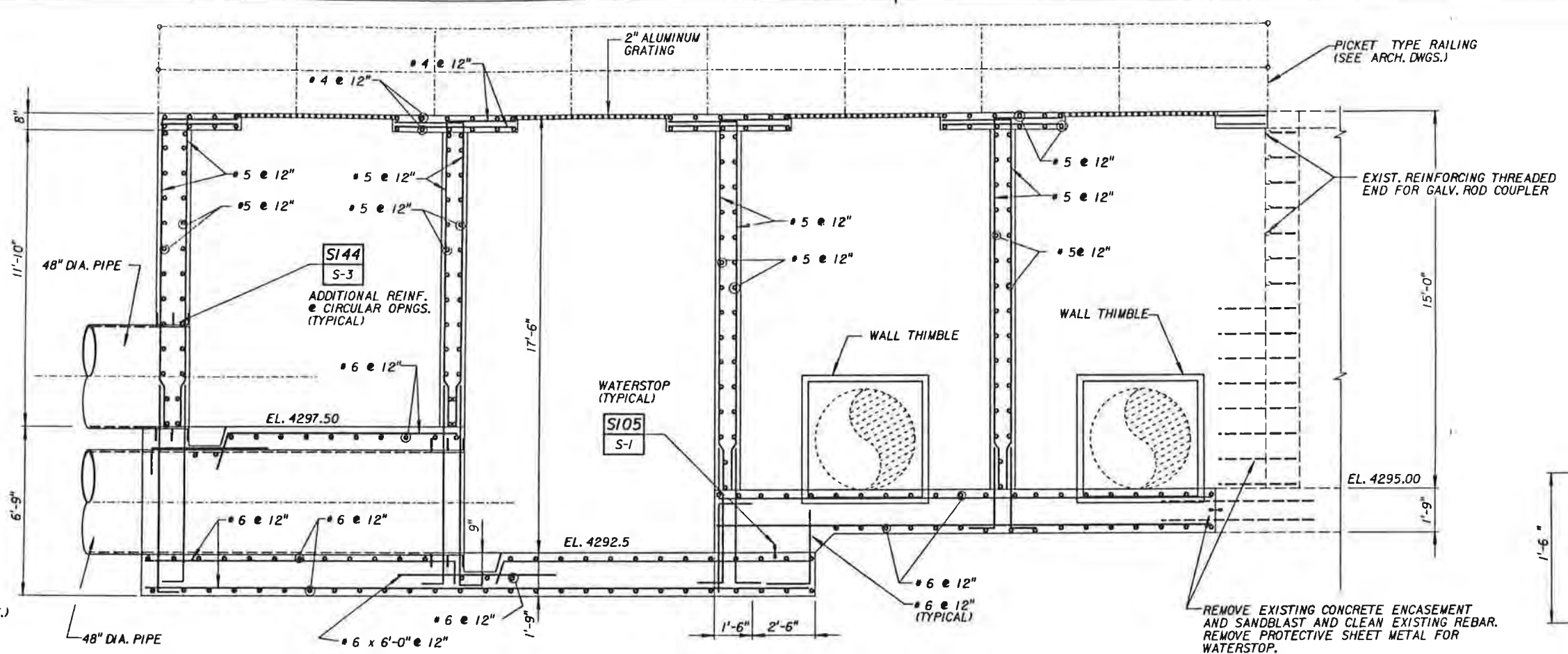
James M. Montgomery  
 Consulting Engineers, Inc.  
 Salt Lake City, Utah



South Valley Water  
 Reclamation Facility

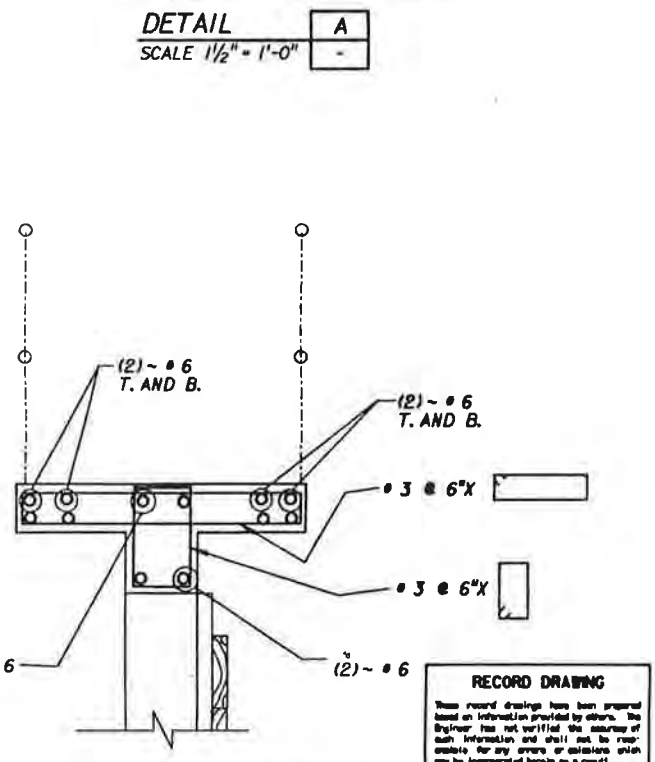
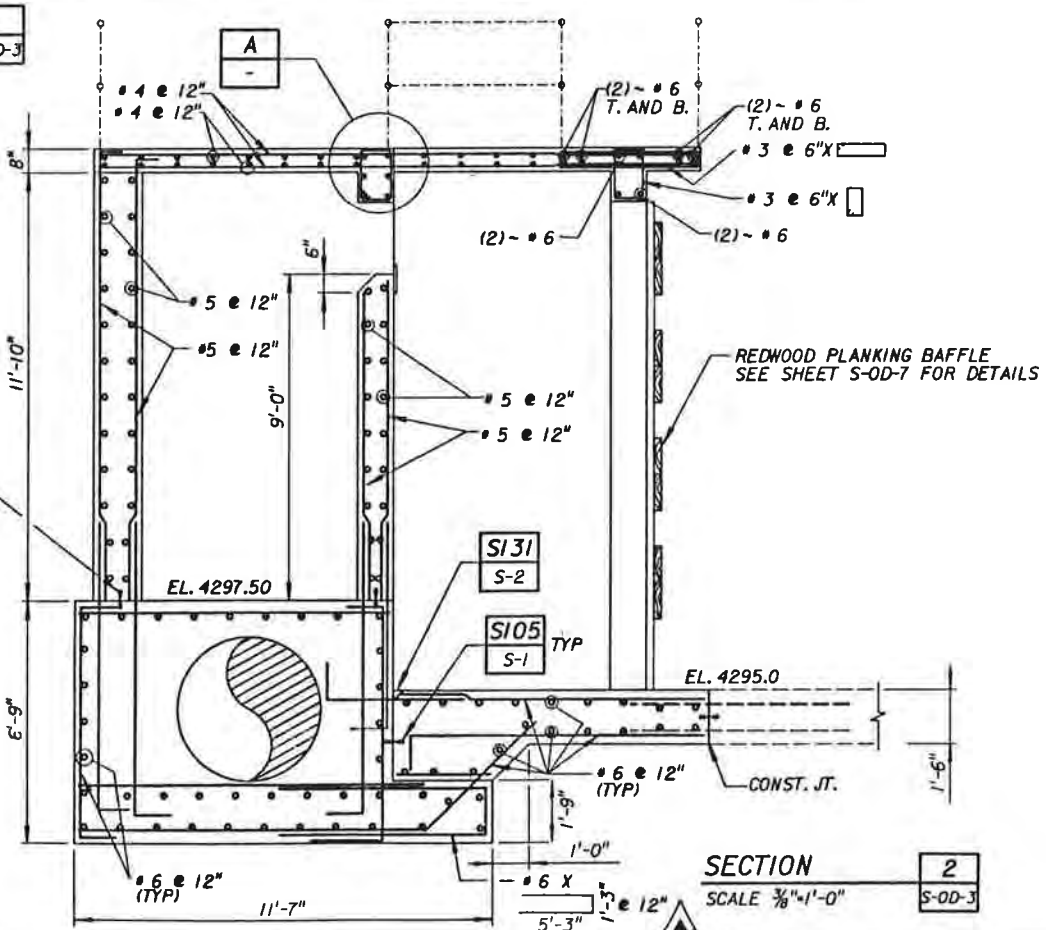
SOUTH VALLEY JOINT ADMINISTRATIVE BOARD  
 PROJECT: OXIDATION DITCH EFFLUENT DISTRIBUTION STRUCTURE FOUNDATION AND FLOOR PLAN

SHEET S-OD-3  
 OF 4 SHEETS



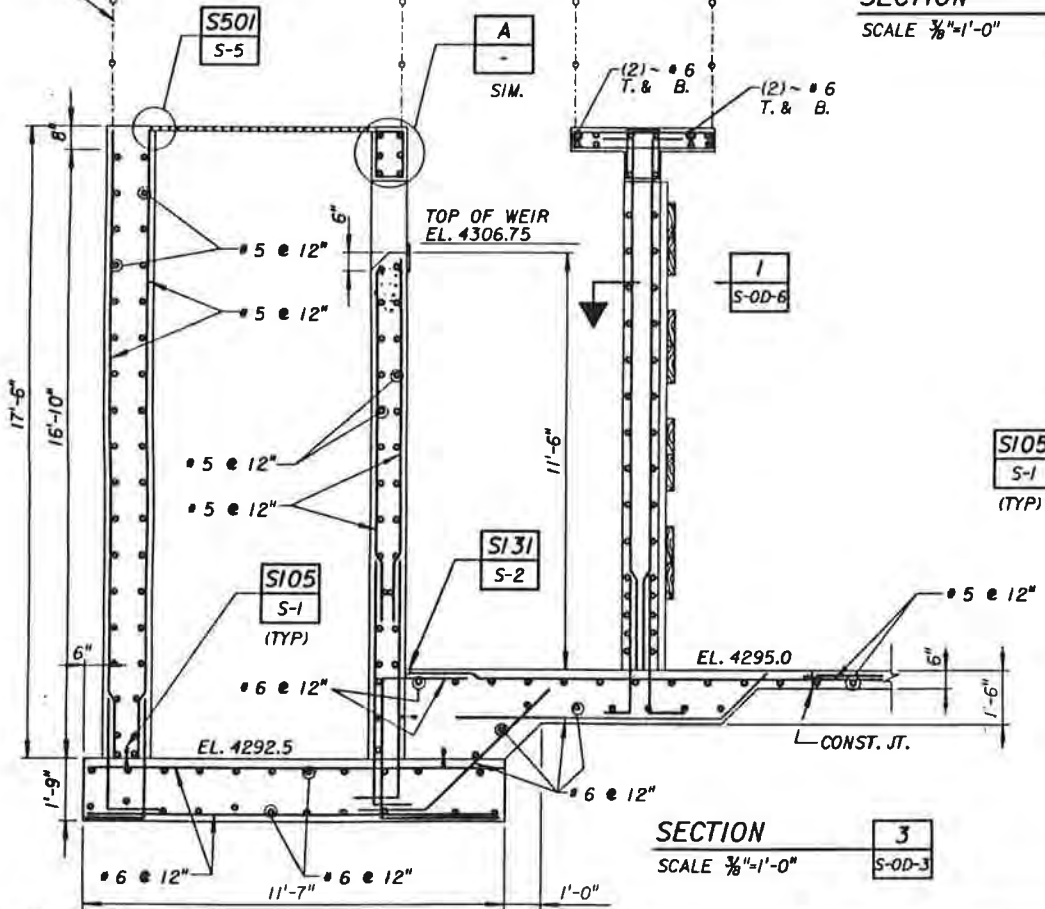
HANDRAIL  
(SEE ARCH. DWGS.)

SECTION 1  
SCALE 3/8" = 1'-0"



SECTION 7  
SCALE 3/8" = 1'-0"

**RECORD DRAWING**  
These record drawings have been prepared based on information provided by others. The Engineer has not verified the accuracy of such information and shall not be responsible for any errors or omissions which may be incorporated herein as a result.



SECTION 3  
SCALE 3/8" = 1'-0"

SECTION 2  
SCALE 3/8" = 1'-0"

JOB NO. FILE NO. USERNAME GOES HERE

REV	DATE	BY	DESCRIPTION

SCALE: AS SHOWN  
WARNING: IF THIS BAR DOES NOT MEASURE 1" THEN DRAWING IS NOT TO SCALE.

DESIGNED: \_\_\_\_\_  
DRAWN: \_\_\_\_\_  
CHECKED: \_\_\_\_\_

SUBMITTED: \_\_\_\_\_  
PROJECT ENGINEER: R. C. E. NO. \_\_\_\_\_ DATE \_\_\_\_\_  
JAMES M. MONTGOMERY CONSULTING ENGINEERS, INC. R. C. E. NO. \_\_\_\_\_ DATE \_\_\_\_\_

James M. Montgomery Consulting Engineers, Inc.  
Salt Lake City, Utah

South Valley Water Reclamation Facility

SOUTH VALLEY JOINT ADMINISTRATIVE BOARD  
PROJECT: OXIDATION DITCH EFFLUENT DISTRIBUTION STRUCTURE SECTIONS AND DETAILS  
SHEET: S-OD-5 OF 5 SHEETS