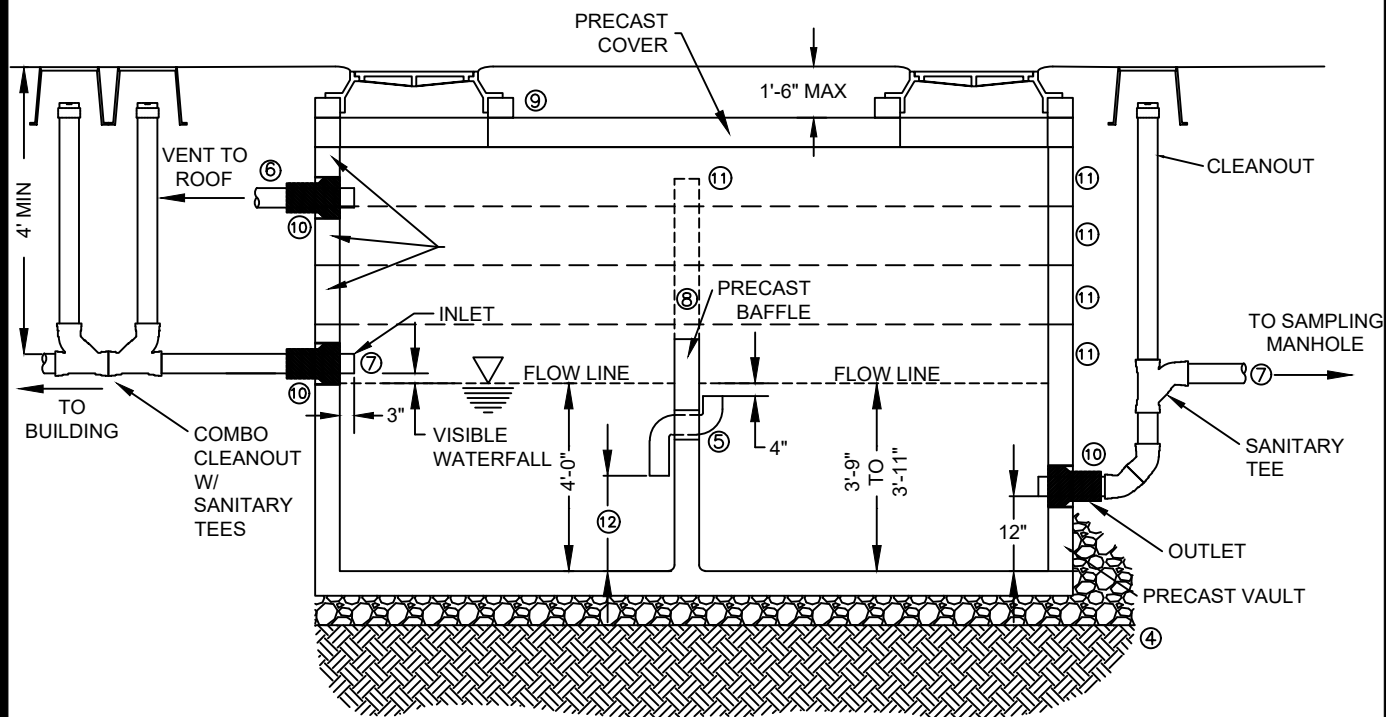


PLAN VIEW



PROFILE VIEW

NOTES:

- ① THE GREASE INTERCEPTOR CAPACITY IS DEFINED AS THE STORAGE VOLUME OF THE VAULT BELOW THE OUTLET PIPE ELEVATION.
- ② THE GREASE INTERCEPTOR SHALL HAVE A MINIMUM CAPACITY OF 1000 GALLONS.
- ③ SANITARY WASTES SHALL NOT BE PLUMBED TO GREASE INTERCEPTOR.
- ④ THE GREASE INTERCEPTOR SHALL BE INSTALLED LEVEL AND ON A COMPACTED FOUNDATION WITH APPROVED BEDDING MATERIAL AS PER APPLICABLE CITY REQUIREMENTS.
- ⑤ PIPING THROUGH BAFFLE WALL SHALL BE 6" SOLVENT WELD PVC. THE INLET AND OUTLET PIPES SHALL BE GASKETED PVC.
- ⑥ GREASE INTERCEPTOR SHALL BE VENTED INDEPENDENTLY THROUGH THE BUILDING, AWAY FROM AIR INTAKES, MIN SIZE 2". VENT MUST BE ABOVE MAXIMUM WATERLINE. OIL SAND SEPARATORS MAY HAVE VENTED LIDS IN LIEU OF SEPARATE VENT THROUGH BUILDING ROOF. (i.e. AUTO SHOPS, CAR WASHES)
- ⑦ THE INLET PIPE SHALL BE BETWEEN ONE AND THREE INCHES HIGHER THAN THE OUTLET PIPE.
- ⑧ THE DIMENSIONS AND CONFIGURATION OF THE VAULT AND BAFFLE SHALL BE ACCORDING TO THE MANUFACTURER'S REQUIREMENTS FOR THE SIZE OF INTERCEPTOR INSTALLED. CHAMBERS SHALL BE EQUAL VOLUMES. THE TOP OF THE BAFFLE WALL SHALL BE AT LEAST 3" ABOVE THE CROWN OF THE INLET PIPE AND SHALL MAINTAIN A 3" GAP FROM THE BOTTOM OF THE COVER.
- ⑨ NO MORE THAN 12" OF GRADE RINGS ARE ALLOWED.
- ⑩ CORED FOR FLEXIBLE RUBBER BOOT PIPE CONNECTOR. FLEXIBLE PIPE CONNECTOR GROUTED FROM INSIDE AFTER INSTALLATION.
- ⑪ VAULT RISER SECTIONS AS REQUIRED, INCLUDING BAFFLE WALL EXTENSIONS (JOINT SEALANT AT ALL JOINTS).
- ⑫ HALFWAY BETWEEN FLOOR AND FLOW LINE (DEPTH OF FLOW MIDPOINT).

4					
3					
2					
1	128010	SVWRF STANDARD	SP	TW	2020
NO	DATE	REVISION	BY	CK	APP



INTERCEPTORS			
DRAWN:	DESIGNED:	CHECKED:	APPROVED:
DATE	FILE NAME	DRAWING NAME	
DEC 2019	SVWRF GREASE INT	PT-1	