

NO.	DATE	REVIEW	DESCRIPTION

**VERIFY SCALE**  
 BAR IS ONE INCH ON ORIGINAL DRAWING

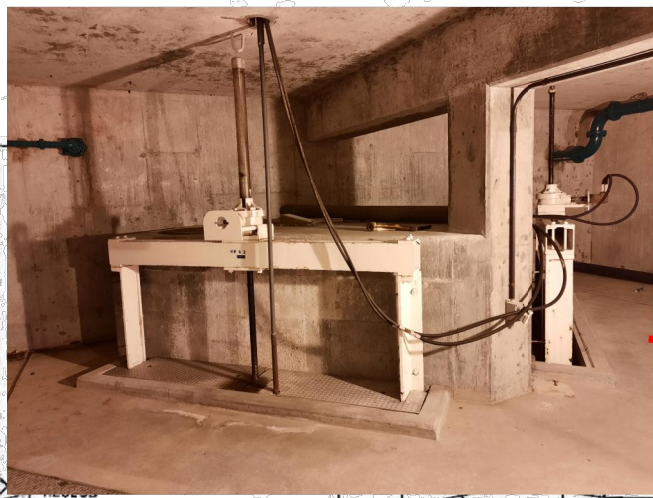
**REVIEW**  
 CHECKED: S. MEYER  
 APPROVED: B. PACKER

**DESIGN**  
 DESIGN: D. COWELL  
 DRAWN: S. DUCKWORTH

**RECORD DRAWINGS**  
 EXISTING 90-IN PIPELINE - 4  
 PROJECT NUMBER: 177-20-01  
 DATE: APRIL 2021

SOUTH VALLEY WATER RECLAMATION FACILITY  
 WEST JORDAN, UTAH

DRAWING NO. **RD-08**  
 SHEET **31** OF **37**



FOR SCREENING BLDG FOUNDATION, SEE SHEET S-HW-9.

RECESS EL. 65.34

RECESS EL. 64.34

TOP OF SLAB EL. 69.34

**EXISTING 90" RCP PIPE**

MANHOLE 2'-0" I.W.P. LID COVER (INFEENAH TYPE, CAT. NO. R-4460-C1 OR EQUAL)

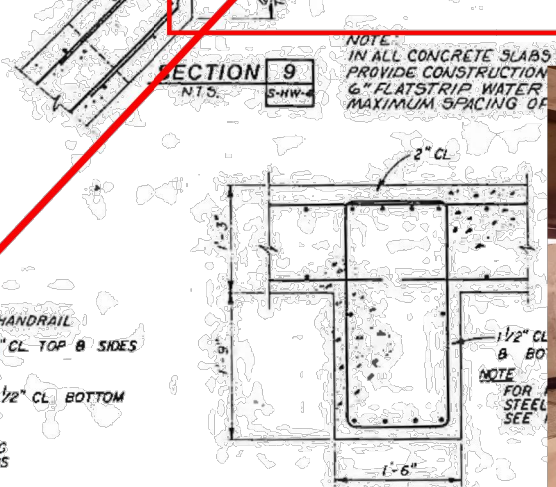
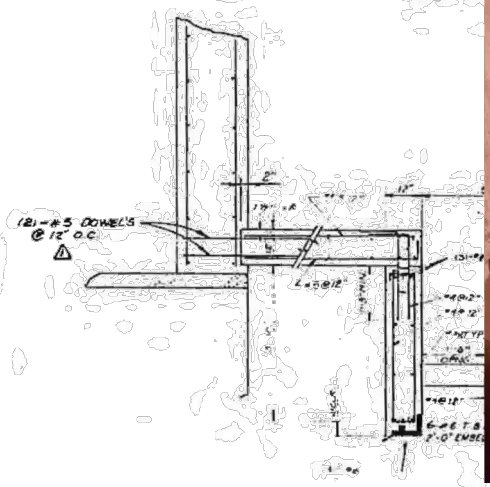
CHANNEL FLOOR EL. 4269.34

PREFABRICATED FLUME INSERT (SEE MECH. DWGS), 4'-0" NESTED FLUME INSTALLED AFTER START-UP

FOUNDATION - PLAN EL. 4269.34

FLOOR PLAN - ELEVATION 4274.5  
 SCALE: 1/4" = 1'-0"

NOTE: IN ALL CONCRETE SLABS AND WALLS PROVIDE CONSTRUCTION & 6" FLATSTRIP WATER MAXIMUM SPACING OF



**RECORD DRAWING**  
 This record drawing has been prepared, in part on the basis of information compiled and furnished by others. The Engineer is not responsible for any errors or omissions which have been incorporated into this document as a result.

JAMES W. MONTGOMERY

**SOUTH VALLEY WATER RECLAMATION FACILITY**

SOUTH VALLEY JOINT ADMINISTRATIVE BOARD

FOUNDATION & FLOOR PLAN

SHEET S-HW-5

NO.	DATE	REV. BY	DESCRIPTION

SOUTH VALLEY WATER RECLAMATION FACILITY		VERIFY SCALE	BAR IS ONE INCH ON ORIGINAL DRAWING
SOUTH SEWER INTERCEPTOR CIPP PROJECT		REVIEW	CHECKED S. MEYER
WEST JORDAN, UTAH		DESIGN	APPROVED B. PACKER
DESIGN	D. COWELL		
DRAWN	S. DUCKWORTH		

RECORD DRAWINGS	EXISTING HEADWORKS BUILDING - 1	PROJECT NUMBER	177-20-01
DATE	APRIL 2021		

FLUME ROOM      SCREENING BUILDING      GRIT CHAMBERS      PUMPING BUILDING

OPTIONAL PIPE ROUTING (TYP)

NORTH ROLL-UP ACCESS DOOR (OUTSIDE)

AREA NEAR NORTH ROLL-UP ACCESS DOOR (INSIDE)

FLOOR STEEL COVERS (FACING TOWARDS NORTH ROLL-UP ACCESS DOOR) (ACCESS TO SCREEN CHANNELS BELOW)

BYPASS LINES TO ACCESS THE TWO MOST WESTERNLY SCREEN CHANNELS THROUGH THEIR FLOOR STEEL COVERS.

FLOOR STEEL COVERS (ACCESS TO SCREEN CHANNELS BELOW)

NOTES:  
 ALL NATURAL GAS CONNECTIONS TO BUILDINGS TO HAVE SHUT-OFF VALVES, DRIP LEGS, STRAINERS AND PRESSURE REGULATORS ALONG FACE OF BUILDING AT POINT OF ENTRY TO BUILDING. BURIED PLASTIC PIPE SLEEVED THROUGH CONCRETE SIDEWALK CHANGING TO STEEL PIPE ABOVE SIDEWALK LEVEL. (SEE TYP. DETAIL L/M-15)

NOTE:  
 REFER TO MIDWEST MECHANICAL CONTRACTORS SHOP DRAWING NO. SK-31283-LB2-DB-SC-05 FOR ADDITIONAL PIPING INFORMATION.

NOTES:  
 1. FOR HVAC LOCATION SEE SHEET M-HW-14  
 2. FIRE EXTINGUISHERS SHALL BE 17 lbs. WITH A U.L. RATING OF 3A  
 80 BC 12 REQUIRED.

RECORD DRAWING  
 This record drawing has been prepared, in part, on the basis of information compiled and furnished by others. The Engineer is not responsible for any errors or omissions which have been incorporated into this document as a result.

SCALE: 1/8" = 1'-0"	DESIGNED: <i>[Signature]</i>	SUBMITTED: <i>[Signature]</i> 5-21-21	JAMES M. MONTGOMERY CONSULTING ENGINEERS INC.	RECLAMATION FACILITY	SOUTH VALLEY JOINT ADMINISTRATIVE BOARD	SHEET M-HW-1
NOTED	DRAWN: <i>[Signature]</i>	PROJECT ENGINEER: <i>[Signature]</i> 5-21-21	RECOMMENDED: <i>[Signature]</i> 5-21-21	PROJECT 2A	HEADWORKS FLOOR PLAN EL. 4287.0	OF 3 SHEETS
	CHECKED: <i>[Signature]</i>					